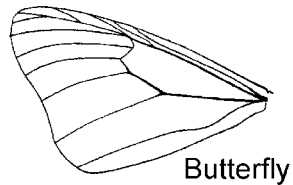


How Scientists Identify Insects

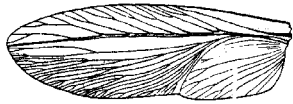
Wings - for the most part, insects are identified by the types of wings they have. These wings below belong to some of the insect orders that are most commonly encountered.



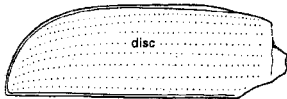
Butterfly



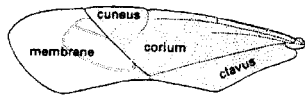
Dragonfly



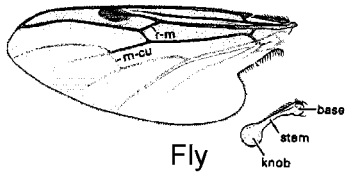
Cockroach



Beetle

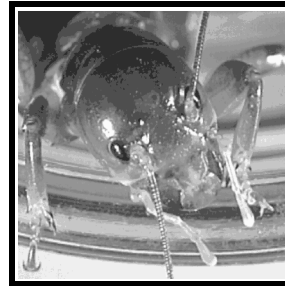


True Bug



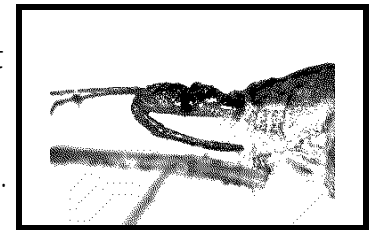
Fly

Mouthparts - you are what you eat - and what you eat with!

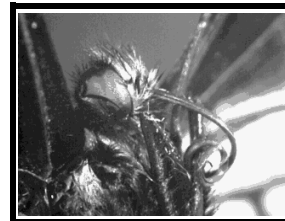


Mouthparts on crickets, grasshoppers and katydids are made for chewing. This is the same for beetles, cockroaches, and dragonflies.

Mouthparts on this true bug allow it to pierce food and suck out juices. This is the same for aphids, leafhoppers and many types of flies.

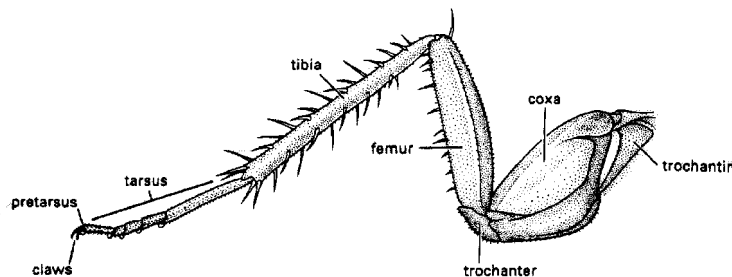


The mouthparts on butterflies and moths are coiled tubes



Legs - the structure and function of legs is also important in separating the different groups.

This cockroac is built for sp



Legs from this aquatic beetle are designed for swimming.

